

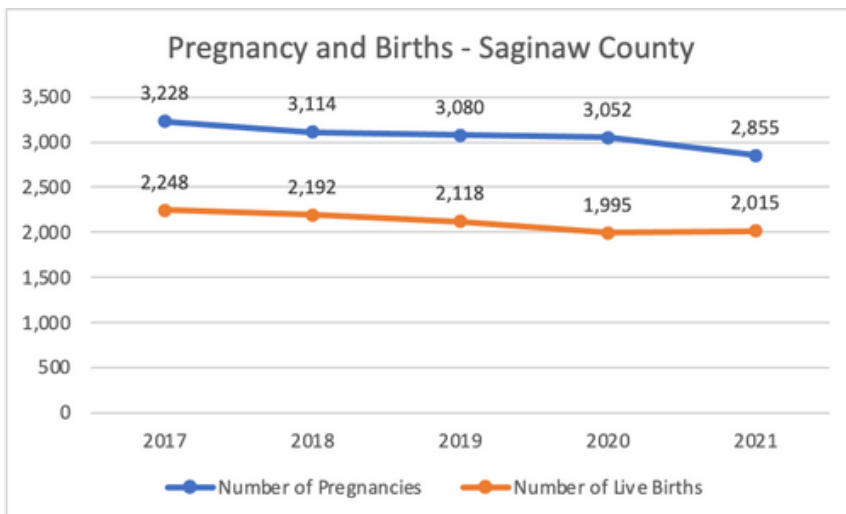
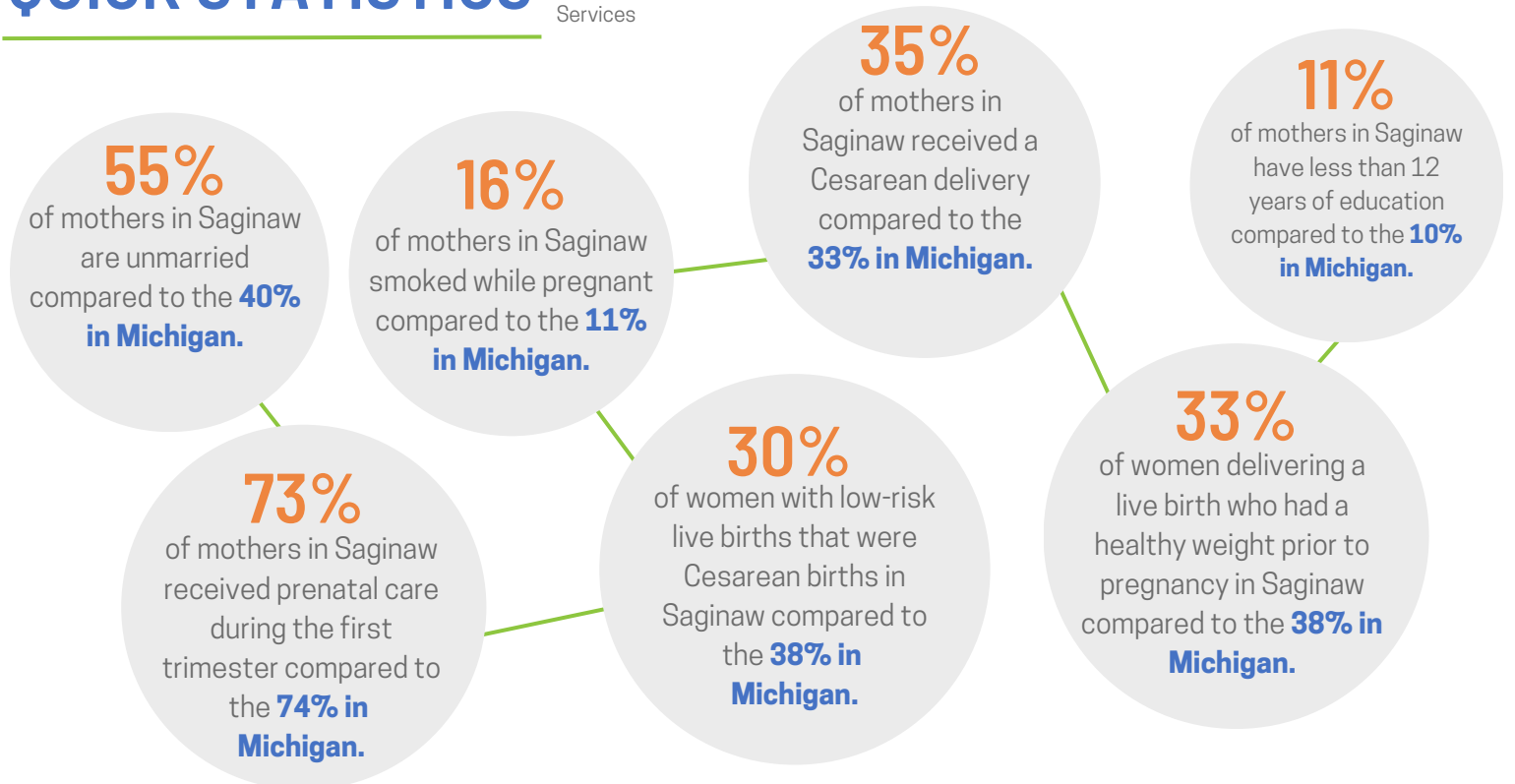
MATERNAL CHARACTERISTICS

DATA-AT-A-GLANCE

Maternal Characteristics are the features of a mother during and after pregnancy. Some examples of these characteristics includes age, level of education, type of delivery, and marital status.

QUICK STATISTICS

Data Source: 2021 Geocoded Michigan Birth Certificate Registry. Division for Vital Records & Health Statistics, Michigan Department of Health & Human Services



This graph represents the number of pregnancies compared to live births in Saginaw County. Important information from this graph includes:

2017 Pregnancy Rate - **92.1/1,000**

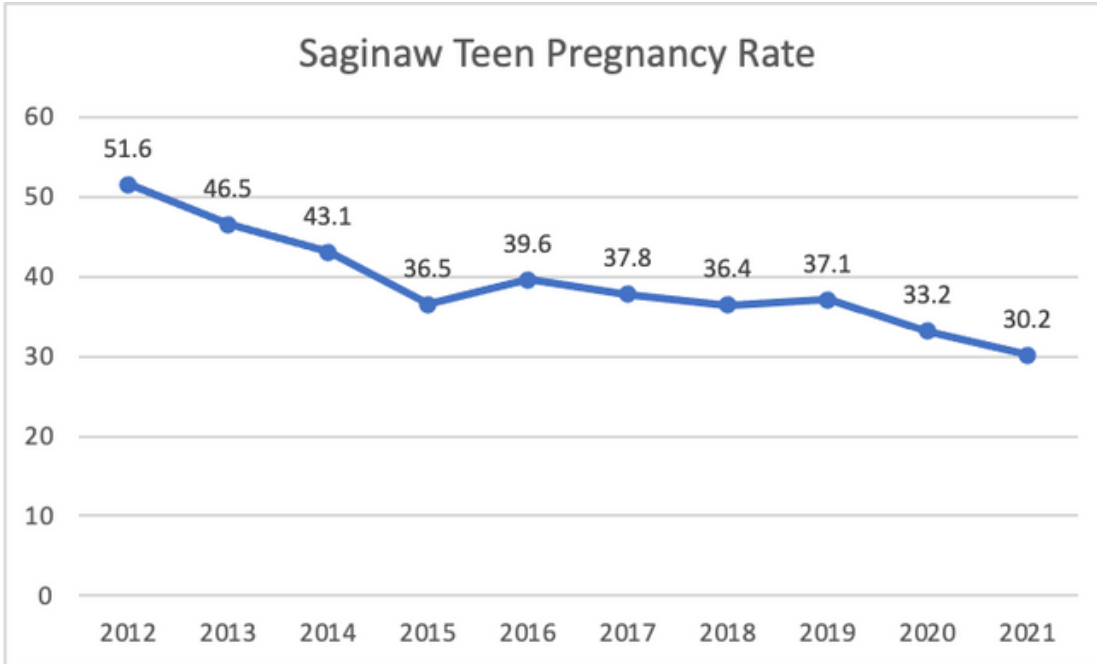
↓

2021 Pregnancy Rate - **82/1,000**

MATERNAL CHARACTERISTICS

DATA-AT-A-GLANCE

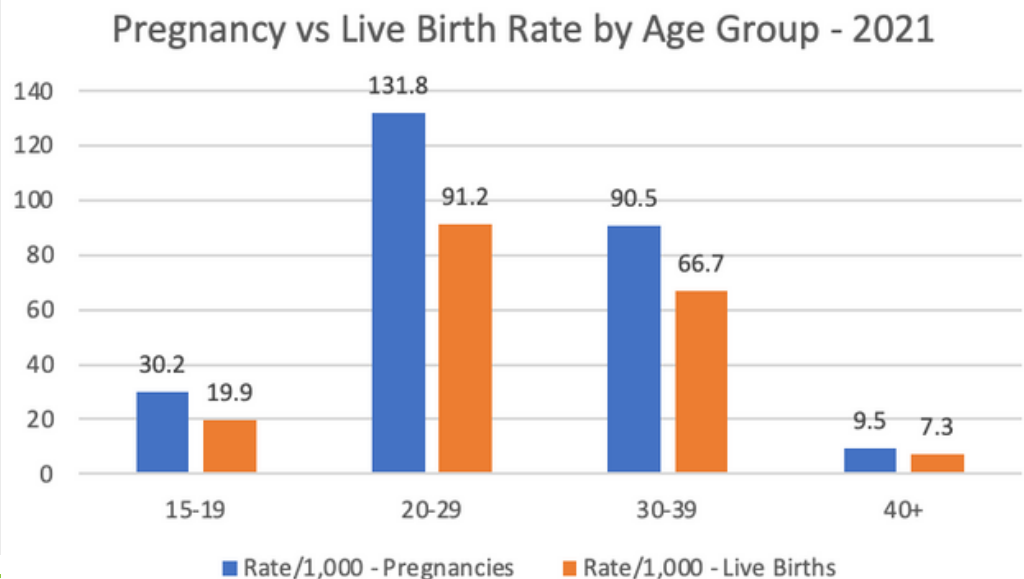
Data Source: 2021 Michigan Abortion File. Division for Vital Records & Health Statistics, Michigan Department of Health & Human Services



This graph represents the rate of teen pregnancy in Saginaw County. In 2021, the rate of teen pregnancy was **30.2**. In 2012, the teen pregnancy was **51.6**. In the span of **nine years**, the teen pregnancy rate **decreased by 21.4**.

This graph represents the pregnancies and live births, which is separated by age group. The **numerical differences** of age groups and rates are:

- **10.3** more pregnancies than live births for age group 15-19
- **40.6** more pregnancies than live births for age group 20-29
- **23.8** more pregnancies than live births for age group 30-39



Data Source: 2021 Michigan Abortion File. Division for Vital Records & Health Statistics, Michigan Department of Health & Human Services